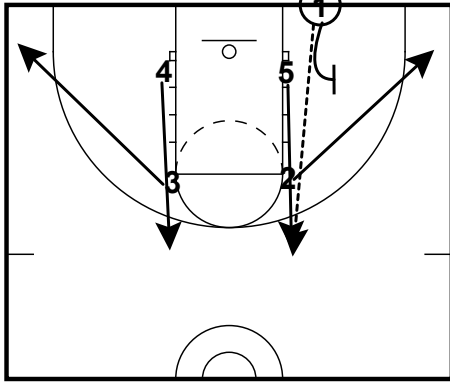


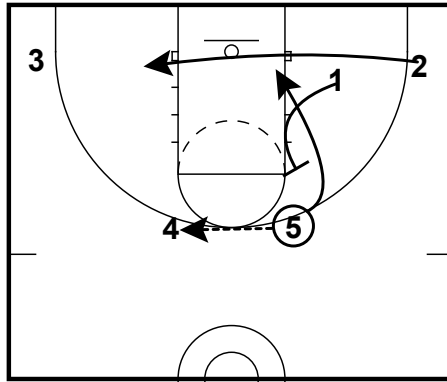
# Troy (Flat) – Back Screen Lob

## All Teams

Troy (Flat) – Back Screen Lob  
BLOB



Troy (Flat) – Back Screen Lob  
BLOB



Everything is similar to their basic (Down – Flat) action, except if the screener lifts before getting a screen, it's because he's going to set a back screen. The tell is if 5 delays setting down screen after making the top to top pass.