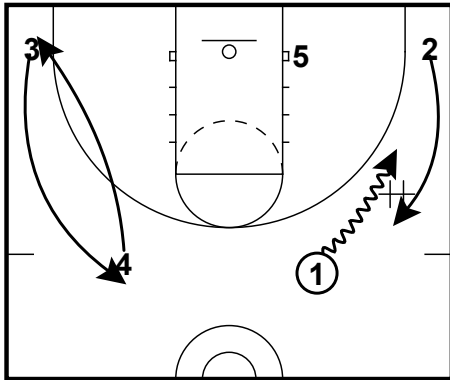


Princeton_Handoff_Rub

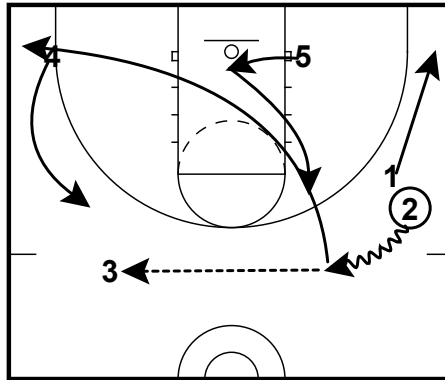
All Teams

Princeton_Handoff_Rub --> Jungle
Offense



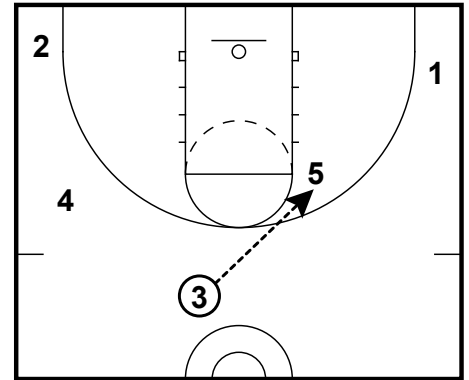
1 and 2 get into DHO as 4 and 3 interchange on weak side. This false motion gets the defense moving.

Princeton_Handoff_Rub --> Jungle
Offense



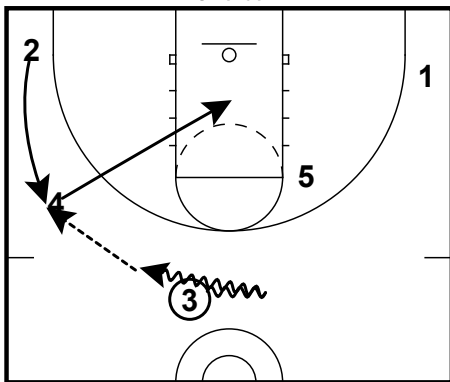
2 reverses the ball to 3 and gets into Rub action for 5.

Princeton_Handoff_Rub --> Jungle
Offense



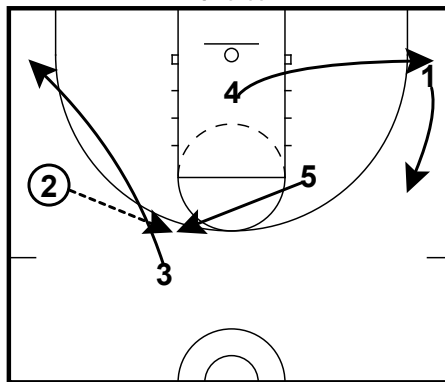
Now we are in "point".

Princeton_Handoff_Rub --> Jungle
Offense



If 3 can't hit 5, 3 will reverse direction "return". The player on the wing will make an immediate back cut. The player in the corner will lift to wing. 3 will pass to 2.

Princeton_Handoff_Rub --> Jungle
Offense



3 will make "blast" cut to corner. 5 can then flash to ball side elbow. We are in "point" but on the side = Jungle.