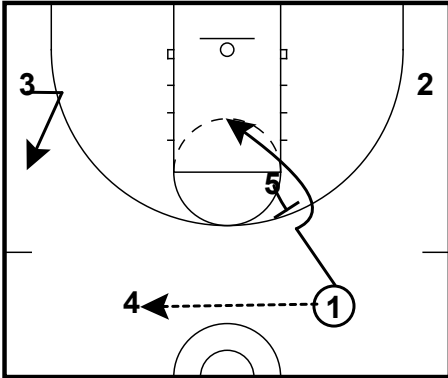


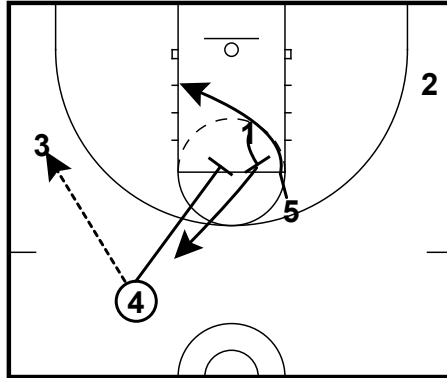
Shuffle Arsenal

Shuffle Quick Hitter



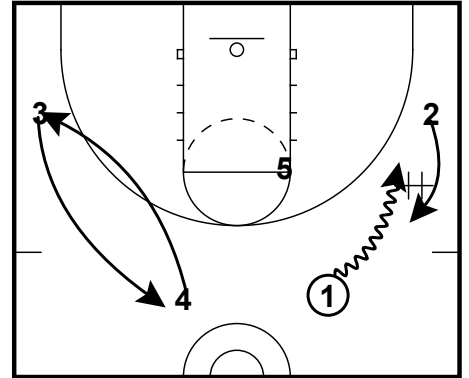
1 will reverse thru 4 and then cut off the shuffle screen from 5.

Shuffle Quick Hitter

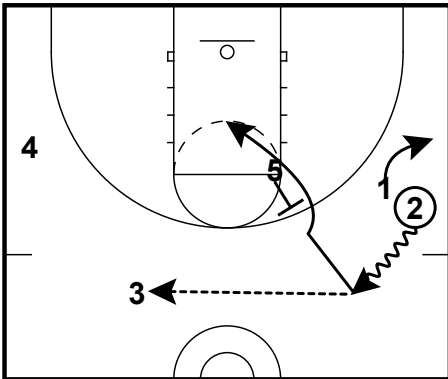


1 will re-screen for 5. If 3 can't enter to 5, 4 will be screening for 1 (STS action).

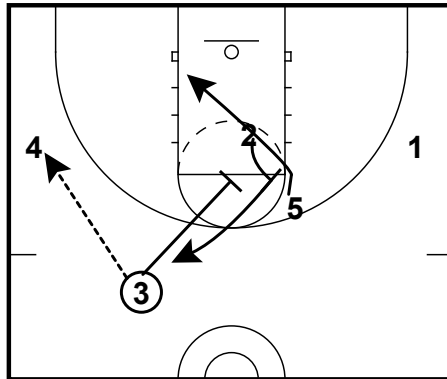
Shuffle Quick Hitter



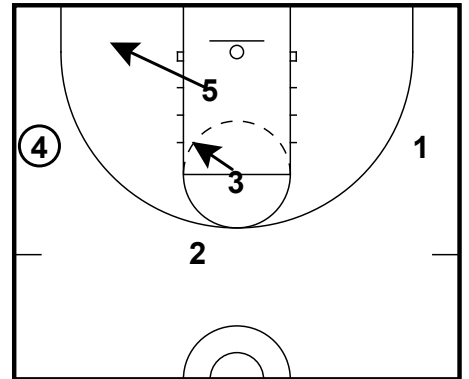
Shuffle Quick Hitter



Shuffle Quick Hitter



Shuffle Quick Hitter



If 5 isn't open, 4 will look to hit 2 off the pin from 3. Or hit 3 slipping. If 5 doesn't get the ball, 5 will continue their cut to create space for the slip.